

balio

diagnostics



AX - 300

Biochemistry Analyzer

AX - 300

Biochemistry Analyzer 300 tests per hour.

- ⊕ Constant 300 tests per hour
- ⊕ For simple and double reagents
- ⊕ Automatic washing station for 5 needles
- ⊕ 70 sample positions
- ⊕ 70 refrigerated reagent positions
- ⊕ Alkaline Acid Detergent
- ⊕ Interior Water Tank
- ⊕ Collision protection
- ⊕ Excellent mixer design
- ⊕ 90 cuvettes washed automatically

Excellent optical system

The AX - 300 uses an excellent optical system giving high sensibility and a cost optimization : semi-reflective mirrors, which guarantee 100% of the transmitted light for all the wavelengths.

Easy to use

The AX - 300 offers two maintenance free micro syringes, one for samples and one for reagents, for more precision. Besides, sampling probes are automatically adjusted and setting positions is directly managed via the software. The analyzer has been developed in order to facilitate the laboratory daily work by easy hydraulic and mechanic accesses.

Modern and innovant

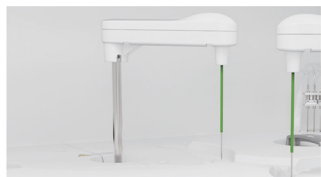
The AX - 300 is directly piloted via one external computer (Windows XP, 7 and 10) and offers one possibility of remote control. Besides and in order to optimize datas management, the analyzer offers one LIS bidirectional connection and a quick update with saving datas.

Economical

In order to optimize costs, the AX - 300 requires a small reaction volume, few consumables and low water and reagents consumption.

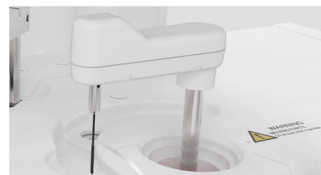


AX - 300



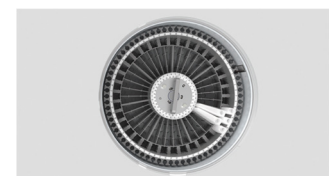
Multifunctional precision sampling probe

- External and internal mirror polishing, washing of external and internal probes,
- Dedicated sampling probe equipped with a sensitive liquid sensor, fast feedback of reagent and sample residue,
- Collision protection, automatic probe depth adjustment.



Excellent mixer design

- Teflon coating mixer. No water drop, reducing transfer,
- Excellent mixing effect with standard mixing procedure.



Reagent and sample trays

- 70 reagent positions and 70 sample positions,
- Non-stop cooling system with Peltier pad inside,
- Barcode reader (optional).



Reaction tray

- 90 reaction cuvettes,
- Reaction volume as low as 150 µl,
- Stable and precise temperature 37 ± 0.1 ° C for the reaction.



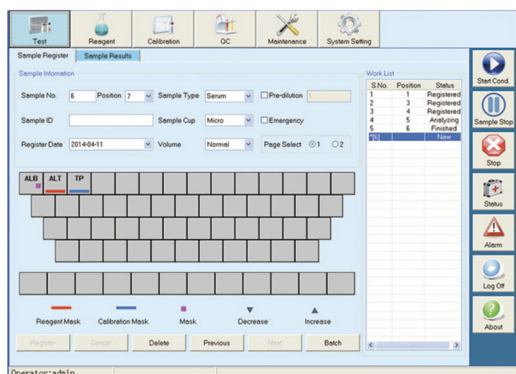
High precision ceramic syringe

- Permanent ceramic piston,
- Accurate dispensing as low as 0.1 µL.



Modern and intuitive software

The AX - 300 offers a complete software with a quick start. With its 6 different intuitive menus, it provides working comfort for the user.



- Automatic sample dilution,
- Reaction result automatic checking and warning,
- Calibration result automatic checking,
- Warning alarm log,
- Linear and non linear calibrations,
- Multi-points calibration up to 8 points,
- Quality control according to Westgard, L-T Plot, cumulative.

AX - 300

TECHNICAL CHARACTERISTICS

GENERAL SPECIFICATIONS

| | |
|------------------------|---|
| Instrument Type | Random access |
| Throughput | Constant Speed 330 t/h (mono or double reagent) |
| Testing Method | Colorimetric method, turbidimetry |
| Calibration | Linear and nonlinear |

SAMPLE SYSTEM

| | |
|-----------------------|---|
| Sample Tray | 70 sample positions |
| Sample Tube | Micro cup, test tube and blood collection tube can be used (\varnothing 12 - 13) mm * (25 - 100) mm |
| Sample Volume | 2 - 30 μ L, step by 0.1 μ L |
| Sample Probe | Liquid surface detection, timely tracking for liquid volume. Collision avoidance. |
| Sample Barcode | Sample barcode reader (optional) |

REAGENT SYSTEM

| | |
|------------------------|--|
| Reagent Tray | 70 reagents positions, non-stop cooling system with peltier pad inside, 24 hours 2°C - 14°C. |
| Reagent Volume | 20 - 300 μ L, step by 1 μ L |
| Reagent Needle | Liquid surface detection, timely tracking for liquid volume. Collision avoidance. |
| Reagent Barcode | Reagent barcode reader (optional) |

OPTICAL SYSTEM

| | |
|---------------------|--|
| Light Source | Halogen Lamp |
| Wavelength | 340, 405, 450, 505, 546, 578, 630, 700, and 4 more options |
| Absor. Range | 0 - 4.0 Abs |
| Resolution | 0.0001 Abs |

REACTION SYSTEM

| | |
|-------------------------|---|
| Reaction Cuvette | 90 reaction cuvettes, new amorphous optical plastics reaction cups, perfect transmittance |
| Reaction Volume | 150 μ L - 330 μ L |
| Reaction Time | 10 minutes |
| Temperature | Peltier pad incubation system, reaction temperature (37°C \pm 0.1°C) |

SYSTEME EXPLOITATION

| | |
|------------------------|--|
| Operation Syst. | Windows XP, 7, 8 & 10 |
| Data Processing | Automatic Calibration, test combination, effective time management of reagents, serum index, whole process detection, linear expansion of enzyme, blank deduction dirty cuvette memory, cross infection prevention, patient information memory and association input, automatic report audit, data fuzzy query, report statistics and printing, reference range grading, alarm information classification, user operation privilege classification management. |
| Report Printing | 6 formats optional, support custom pattern |
| Interface | TCP/IP network interface |

OTHERS

| | |
|---------------------|--|
| Dimensions | 920 * 650 * 1120 mm |
| Weight | 170 kg |
| Water Consu. | 12 liters per hour max. |
| Power Supply | AC 110/220V \pm 10%, 50/60 Hz, 650 W |