

balio

diagnostics



AX - 300

Biochemistry Analyzer 300 tests per hour



AX - 300

Biochemistry Analyzer 300 tests per hour.

- ⊕ For simple and double reagents
- ⊕ Automatic washing station for 5 needles
- ⊕ 90 cuvettes washed automatically
- ⊕ Refrigerated reagents and samples
- ⊕ Internalized Water tank
- ⊕ Collision protection
- ⊕ Independant mixer

Excellent optical system

The AX - 300 uses an excellent optical system giving high sensibility and a cost optimization : semi-reflective mirrors, which guarantee 100% of the transmitted light for all the wavelenghts.

Easy to use

The AX - 300 offers two maintenance free micro syringes, one for samples and one for reagents, for more precision. Besides, sampling probes are automatically adjusted and setting positions is directly managed via the software. All the maintenance procedures are pre-programmed and can be performed in one clic.

Modern

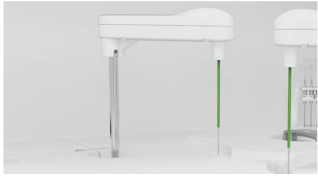
The AX - 300 is directly managed via an external computer (Windows XP, 7 or 10) and offers the possibility of remote control. Besides and in order to optimize data management, the analyzer offers one LIS bidirectional connection, a quick update with saving data.

Economical

In order to optimize costs, the AX - 300 requires a small reaction volume, few consumables and low water and reagents consumption.

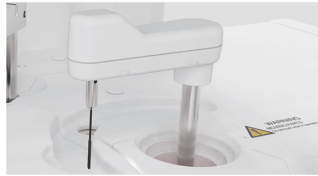


AX - 300



Multifunctional precision sampling probe

- Dedicated sampling probe equipped with a sensitive liquid sensor,
- Washing of external and internal probes,
- Collision protection, automatic probe depth adjustment.



Excellent mixer design

- Teflon coating mixer. No water drop, reducing transfer and avoiding contamination,
- Optimal mixing procedure for samples and reagents.



Reagent and sample trays

- Closed system : Ready to use reagents, 50 positions for reagents and samples with available barcode reader and 70 positions for reagents and samples with available barcode reader for samples.
- Open system : Standard reagents, 70 positions for reagents, 70 positions for samples, barcode reader available for samples.



Reaction tray

- 90 reaction cuvettes,
- Minimal reaction volume 150 μL ,
- Stable temperature 37 ± 0.1 ° C for the reaction.



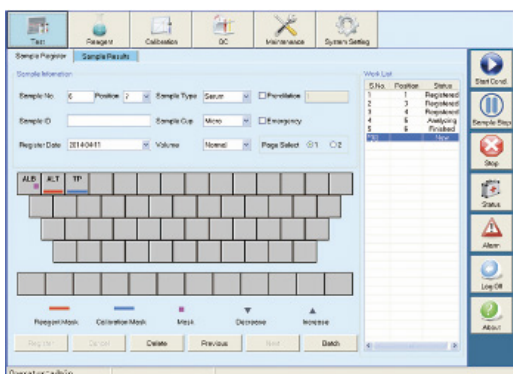
High precision ceramic syringe

- Permanent ceramic piston,
- Accurate dispensing 0.1 μL .



Modern and intuitive software

The AX - 300 offers a complete software with a quick start. With its 6 different intuitive menus, it provides working comfort for the user.



- Automatic sample dilution,
- Reaction result automatic checking and warning,
- Calibration result automatic checking,
- Alarm log,
- Linear and non linear calibrations,
- Multi-points calibration up to 8 points,
- Quality control according to Westgard and Levey-Jennings.

AX - 300

TECHNICAL CHARACTERISTICS

GENERAL SPECIFICATIONS

Instrument Type	Random access
Throughput	300 t/h (mono or double reagent)
Testing Method	Photometry & turbidimetry
Calibration	Linear and nonlinear

SAMPLE MANAGEMENT

Sample Tube	Micro cup, test tube and blood collection tube can be used (ø 12 - 13) mm * (25 - 100) mm
Sample Volume	2 - 30 µL, incrementation by 0.1 µL
Sample Probe	Liquid surface detection, timely tracking for liquid volume. Collision avoidance.

REAGENT SYSTEM

Reagent Tray	Peltier cooling System, non stop, 24 hours 2°C - 14°C.
Reagent Volume	20 - 300 µL, incrementation by 1 µL
Reagent Needle	Liquid surface detection, timely tracking for liquid volume. Collision avoidance.

OPTICAL SYSTEM

Light Source	Halogen Lamp
Wavelength	340, 405, 450, 505, 546, 578, 630, 700, and 4 more options
Absor. Range	0 - 4.0 Abs
Resolution	0.0001 Abs

REACTION SYSTEM

Reaction Cuvette	90 reaction cuvettes, new amorphous optical plastics reaction cups, perfect transmittance
Reaction Volume	150 µL - 330 µL
Reaction Time	10 minutes
Temperature	Incubation system, reaction temperature (37°C ± 0.1°C)

EXPLOITATION SYSTEM

Operation Syst.	Windows XP, 7, 8 & 10
Data Processing	Automatic Calibration, test combination, effective time management of reagents, whole process follow up, blank test deduction dirty cuvette memory, patient information memory, automatic report review, report statistics and printing, reference range values management, clear alarm information.
Report Printing	6 formats optional, support custom pattern

OTHERS

Dimensions	920 * 650 * 1120 mm
Weight	170 kg
Water Consu.	12 liters per hour max.
Power Supply	AC 110/220V ± 10%, 50/60 Hz, 650 W

