

# balio

diagnostics



---

# AX - 200

Biochemistry Analyzer, 200 tests per hour

---

# AX - 200

## Biochemistry analyzer 200 tests per hour

- ⊕ High-performance biochemistry analyzer
- ⊕ Integrated barcode reader
- ⊕ Very low water consumption
- ⊕ 40 reagent positions
- ⊕ 40 sample positions
- ⊕ 9 wavelengths (340 nm - 700 nm)
- ⊕ Reagent detection and traceability
- ⊕ Needle collision protection
- ⊕ Photometry and Turbidimetry
- ⊕ 60 reusable reaction cuvettes

### **Ease of Use :**

Intuitive and ergonomic interface  
Ready-to-use system for quick setup  
Simplified maintenance with an 8-step automatic washing system (in using detergent & distilled or demineralized water).

### **Economical:**

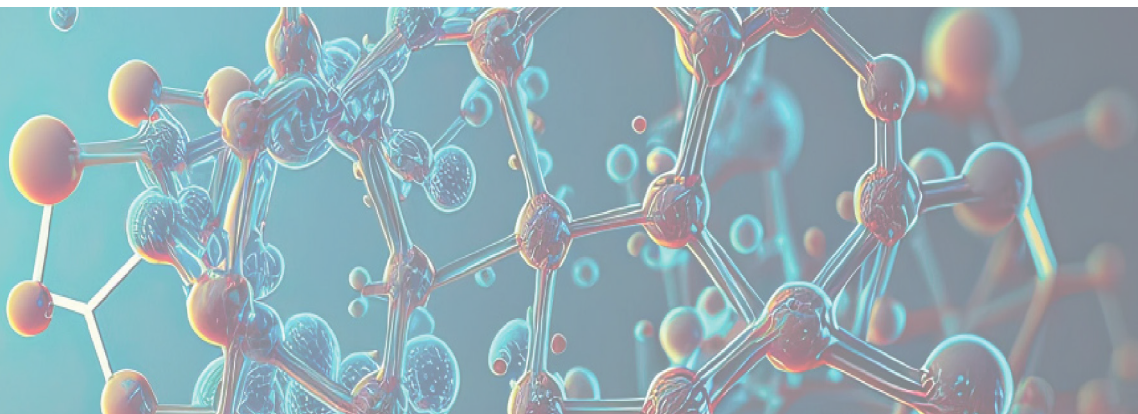
Low reagent consumption due to optimized reaction volume (minimum 180  $\mu$ L)  
Advanced refrigeration system: Stabilization of reagents between 2°C and 8°C, ensuring optimal storage  
Self-cleaning and reusable reaction cuvettes for 3 to 6 months, reducing operating costs  
The analyzer uses a maximum of 5 liters per hour

### **Modern :**

Compact design and advanced performance  
Bidirectional ASTM LIS connection: Secures and optimizes data management  
Compatibility with Windows 7, 10, and 11 for integration into current environments  
Integrated barcode reader for reagents and samples (optional)



# AX - 200

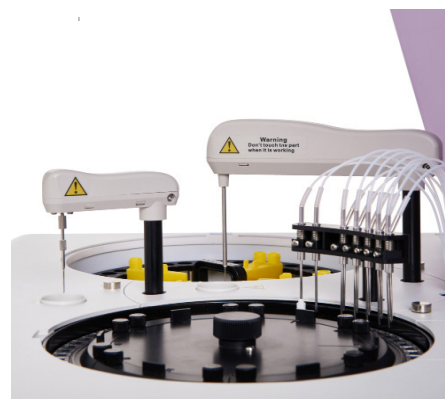


## High Performance

- Throughput: Up to 200 tests per hour with the ability to manage up to 39 parameters simultaneously.
- Reaction Types: End point, kinetic, and two-point.
- Calibration Types: Linear and nonlinear (logit-log 4p, logit-log 5p, multipoint, exponential, spline, polynomial, logistic, segment line).
- STAT Position: Priority for urgent tests.
- Reagent Blank Test: Programmable.
- Sample Blank Test: Programmable.
- Automatic Sample Dilution.
- Automatic Reanalysis Function.
- Real-time Visualization: View the status of reaction cuvettes and reagent sample trays.
- Real-time Visualization and Saving: Reaction curves.
- Internal QC Program: Levey Jennings chart, Westgard rules.

## High Precision.

- Automatic cuvette control
- Sensitivity: 0.001 ABS, absorbance range: 0 to 4.0 ABS.
- Independent stainless steel stirrer.
- Number of cleaning needles: 7, including 2 dedicated to drying.
- Programmable detergent washing.
- Stainless steel sampling needle with automatic internal and external cleaning.



## High Traceability

- Traceability of lot numbers and expiration dates, reagents, controls, and calibrators.
- Analysis and statistics of patient results.
- Financial statistics.
- Alarm management.

## High Safety

- Capacitive level detection & lateral & vertical anti-collision system.
- Backup of all data related to performed tests.
- Continuous refrigeration of reagents and samples between 2°C to 8°C, ensuring their stability and reliable analysis.
- Exclusive access for technical service.

# AX - 200

## TECHNICAL SPECIFICATIONS

### GENERAL INFORMATION.

Capacity: 200 tests per hour.  
Principles: photometry and turbidimetry.  
Instrument Type: Random access.  
STAT emergency position: Priority.  
Sample types: serum, plasma, urine, CSF.

### METHODOLOGIES

End point, kinetic, two-point  
Programmable monochromatism and bichromatism  
39 parameters simultaneously online

### REAGENT TRAY.

40 refrigerated reagent positions, including 1 position for detergent and 1 position for dilution. Integrated barcode reader for close system ( optional ).  
Lot and expiration date management for R1 & R2.  
Volume: 10 - 300 µL, with 1 µL increments.

### SAMPLE TRAY.

40 sample, calibrator, QC, and STAT positions.  
Integrated barcode reader.  
Sample Volume: 2 - 50 µL, with 0.1 µL increments.

### REACTION TRAY.

60 reusable reaction cuvettes  
Minimum reaction volume: 180 µL  
Incubator with temperature control: 37°C +/- 0.1°C

### REFRIGERATION.

Cooling of reagents and samples 24/7  
Non-stop cooling system to maintain reagents between 2°C to 8°C.

### LIGHT SOURCE.

Long-lasting halogen-tungsten lamp, 6V

### WATER CONSUMPTION.

5 liters per hour maximum

### WASHING.

Automatic washing system in 8 steps with detergent and distilled water

### WAVELENGTHS.

340, 405, 450, 492, 510, 546, 578, 630, 700 nm

### PHOTOMETRY & RESOLUTION.

Photometry range: 0 - 4.0 ABS, Resolution: 0.001 ABS.

### CALIBRATION.

Linear and nonlinear calibration, calibration factor history

### QUALITY CONTROL.

Quality control with Levey-Jennings chart and programmable Westgard rules

### CONNECTION.

Bidirectional ASTM LIS connection, Windows 7 & 10, 11 system, and RS232 port

### ENVIRONMENT.

Temperature: between 10°C and 30°C; Relative humidity: < 90%, Atmospheric pressure: 70 - 106 kPa

### POWER SUPPLY.

AC 110 to 220V - 50/60 Hz, 350 VA