

balio

diagnostics



AX - 300

Biochemistry analyzer 300 tests per hour

AX - 300

Biochemistry analyzer 300 tests per hour

- ⊕ Automatic washing station with 5 needles
- ⊕ Integrated barcode reader
- ⊕ Refrigerated samples and reagents
- ⊕ Photometry and turbidimetry
- ⊕ Internal water tank
- ⊕ Collision protection
- ⊕ Independent agitator
- ⊕ 90 cuvettes automatically cleaned

A high-performance optical system

The AX-300 uses a high-performance optical system, providing high sensitivity and cost optimization: the semi-reflecting mirror technique ensures 100% light transmission at each wavelength.

Ease of use

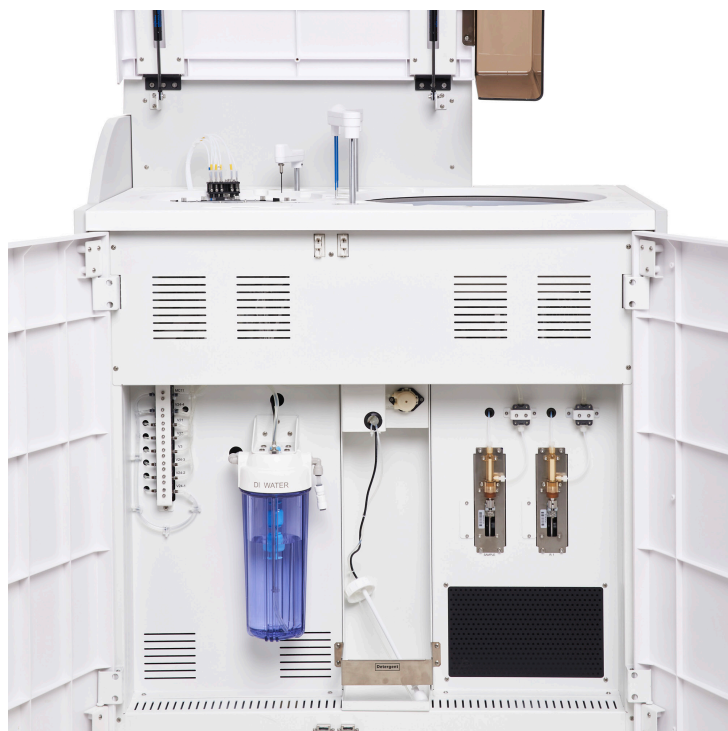
For greater accuracy, the AX-300 features two maintenance-free micro-syringes, one for samples and one for reagents. Additionally, the sampling needles are automatically adjusted, and position settings are made directly through the software. The analyzer has been developed to simplify the daily work of the laboratory, offering accessibility at both the hydraulic and mechanical levels.

Modern

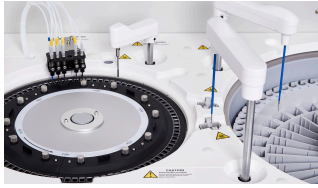
The AX-300 is directly controlled via an external computer (Windows XP, 7, 10 & 11) and offers remote control capabilities. Aiming to optimize data management, the analyzer features a bidirectional LIS connection and quick updates with data backup.

Economical

In order to optimize costs, the AX-300 requires a low reaction volume (150 μ L), minimal consumables, and low water consumption.



AX - 300



Precision sampling needles

- Equipped with a capacitive sensor.
- Internal and external needle washing.
- Collision protection.



Excellent stirrer design

- Teflon coating on the stirrer. No residual water droplets, preventing contamination.
- Optimal mixing procedure for reagents and samples.



Reagent and sample tray

- Closed system: Ready-to-use reagents, 50 positions for reagents and samples, integrated barcode reader.
- Open system: Standard reagents, 70 positions for reagents, 70 positions for samples, barcode reader available for samples.



Reaction tray

- 90 reusable cuvettes,
- Minimal reaction volume: 150 μL ,
- Stable temperature of $37 \pm 0.1^\circ\text{C}$ for the reaction.



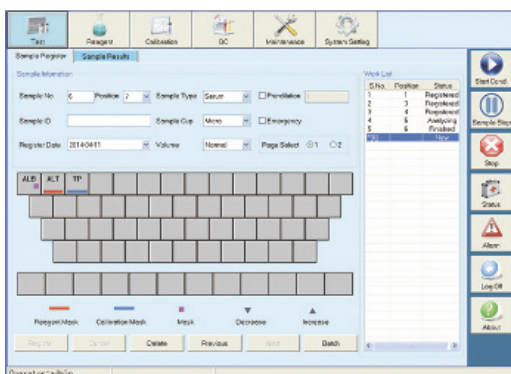
High-precision ceramic syringe

- 2 maintenance-free ceramic syringes,
- Precision: 0.1 μL .



A modern and intuitive software

The AX - 300 features a comprehensive software with a quick learning curve. Equipped with 6 intuitive menus, it provides comfort and ease of use for the operator.



- Automatic sample dilution,
- Automatic reaction result verification and alerts,
- Automatic calibration result verification,
- Alarm log,
- Linear and nonlinear calibration,
- Dedicated software for maintenance,
- Quality control according to Westgard and Levey-Jennings.

AX - 300

TECHNICAL SPECIFICATIONS

GENERAL CHARACTERISTICS

Instrument type :	Random access
Throughput:	300 tests/hour (single or double reagent)
Measurement principle:	Photometry & turbidimetry
Calibration:	Linear and nonlinear calibration
Method:	End point, two-point, kinetic, fixed time methods

SAMPLE SYSTEM

Tube	Micro cup, test tube, and blood collection tube can be used (12-13)mm*(25-100)mm
Volume	20 - 300 μ L, incremented by 0.1 μ L
Needle	Liquid surface detection, real-time monitoring of liquid volume. Anti-collision system.

OPTICAL SYSTEM

Light source	Halogen lamp
Wavelength	340,405,450,505,546,578,630,700 and 4 additional optional wavelengths
Absorption range	0-4.0 Abs
Resolution	0.0001 Abs

WATER CONSUMPTION

12 liters per hour maximum

REACTIONAL SYSTEM

Reaction cuvettes :	90 reaction cuvettes made of amorphous optical plastic, perfect transmittance
Volume :	150 μ L - 330 μ L
Temperature :	Incubation system, reaction temperature (37 °C \pm 0.1)

OPERATING SYSTEM

Operating System :	Windows XP, 9,8,10 & 11
Data Processing :	Automatic calibration, test combination, efficient reagent time management, comprehensive process tracking, dirty cuvette memory, blank test detection, patient information memory, automatic report review, statistical reports and printing, management of reference value ranges, clear operational alarms.
Printing :	6 optional, customizable formats
Computer :	Provided with the analyzer

OTHER INFORMATION

Dimensions	920* 650* 1120 mm
Weight	170 kg
Water Consumption	12 liters per hour max
Power Supply	AC 110/220V + 10%, 50/60 Hz

